

# Ajdan Waterfront

[WATERFRONT.AJDAN.COM](http://WATERFRONT.AJDAN.COM)

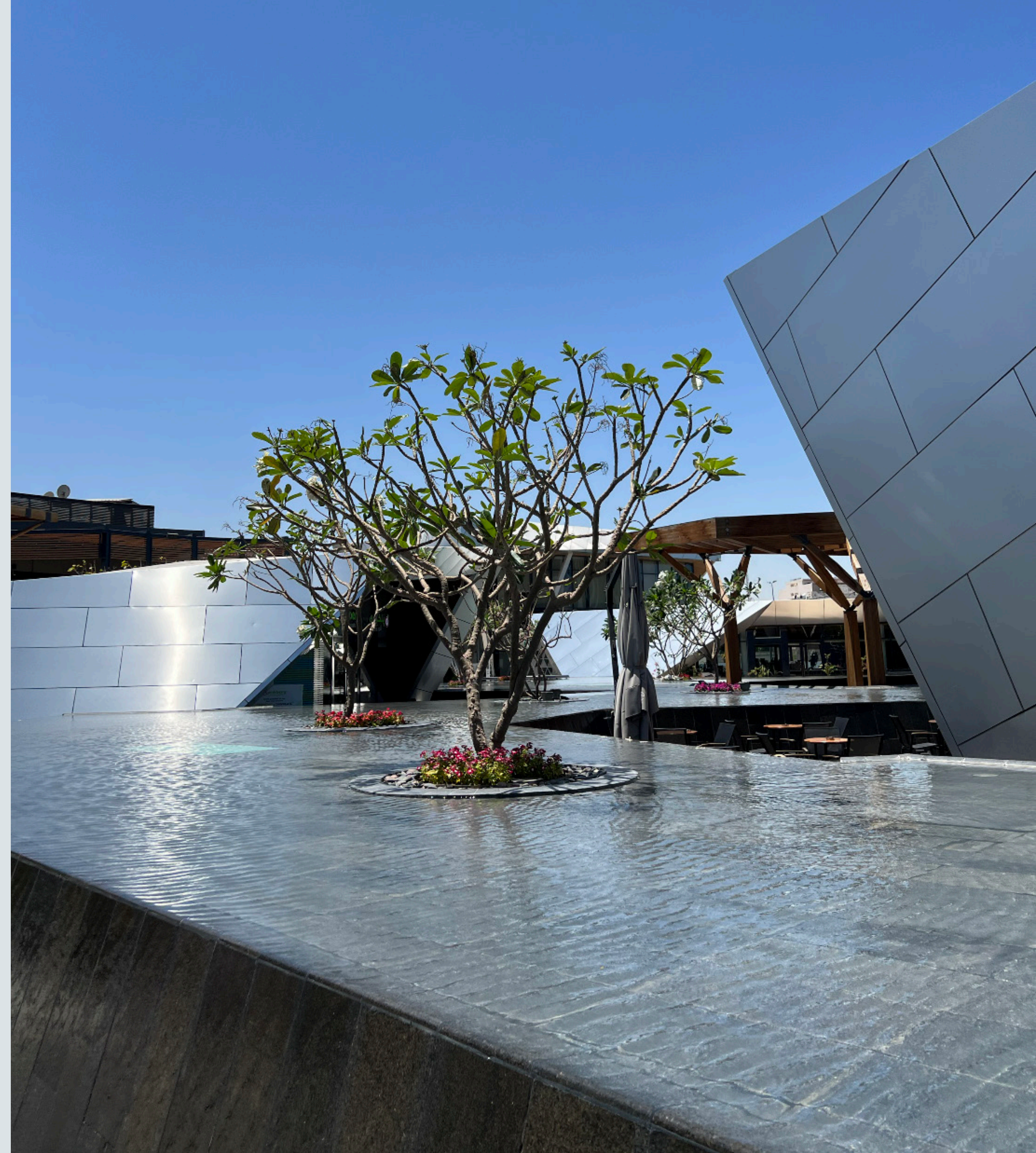




# *The Developer of Lifestyle*

Ajdan Real Estate Development Company was established to start a new age of contemporary and quality lifestyle destinations by developing the finest residential, retail, entertainment & hospitality projects.

[WATERFRONT.AJDAN.COM](http://WATERFRONT.AJDAN.COM)





Developing  
*The Future of  
Lifestyle*

WATERFRONT.AJDAN.COM

*Executed*

22,388 SQM  
COMMERCIAL BUA

2,742,628 SQM  
RESIDENTIAL BUA

*Pipeline*

182,806 SQM  
COMMERCIAL BUA

1,311,814 SQM  
RESIDENTIAL BUA

34,442 SQM  
HOSPITALITY BUA





[WATERFRONT.AJDAN.COM](https://waterfront.ajdan.com)

# *A Holistic Destination*

Overlooking the waters of the Arabian Gulf, a unique offering of retail spaces with mesmerizing views complements the exceptional architecture of Ajdan Waterfront.

These limited and one-of-a-kind retail shops can provide your brand with more recognition and give your customers the experience they deserve.



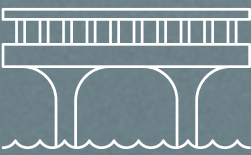


# At the Heart of the City

## CLOSE PROXIMITY TO:



DOWNTOWN



KING FAHAD  
CAUSEWAY



SAUDI ARAMCO



KFIA



— Ajdan Rise اجدان رايز

PRINCE TURKI ROAD  
CORNICHE

AJDAN WALK  
CINEMA  
amc  
THEATRES.

CINEMA RETAIL

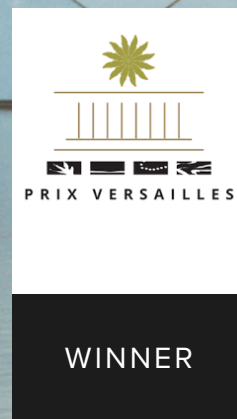
اجدان ووك  
AjdánWalk

AJDAN HOTEL  
*Fairmont*

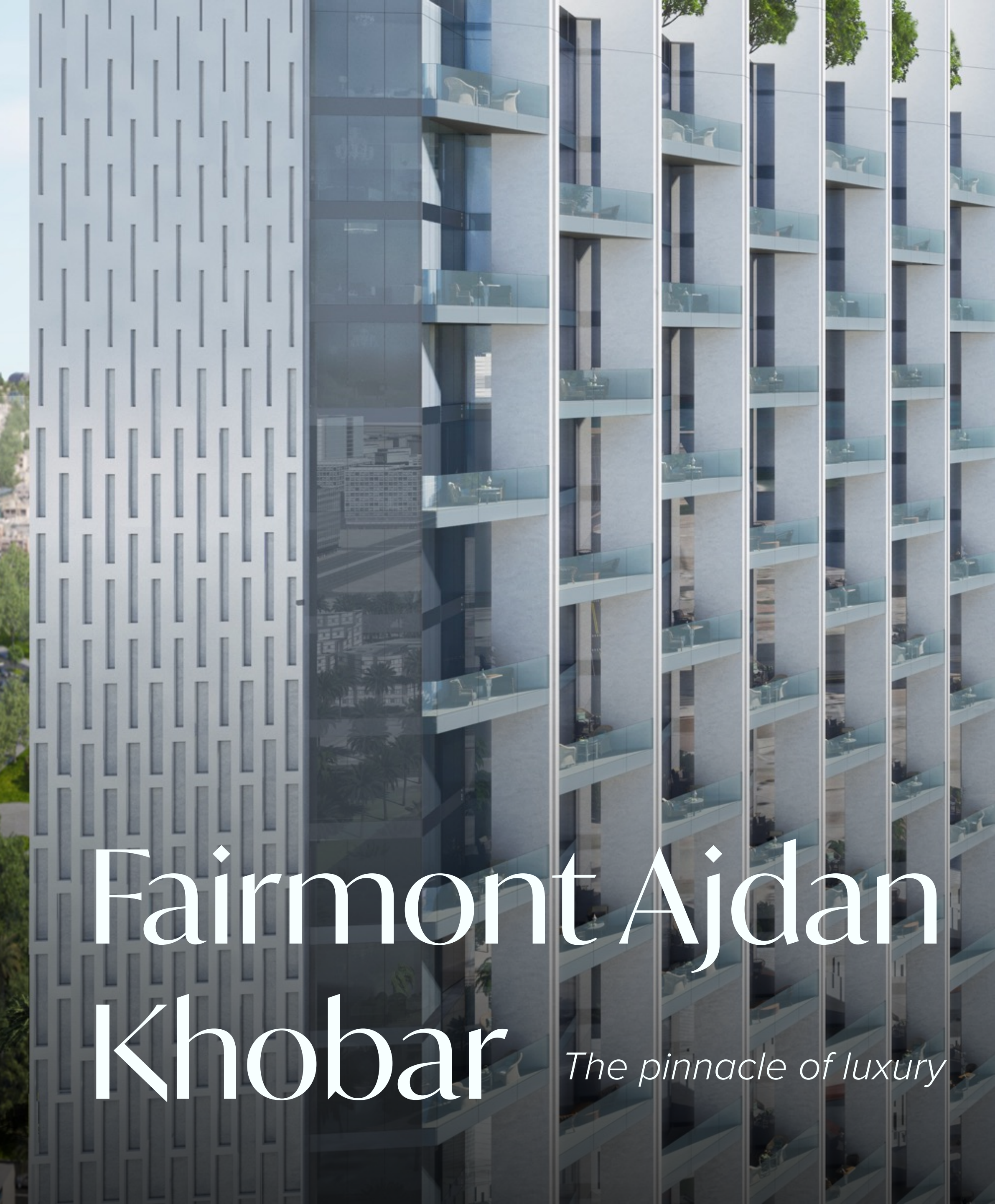


# Ajdan Waterfront

*A new definition to life by the sea*







# Fairmont Ajdan Khobar

*The pinnacle of luxury*



753

TOTAL NLA (SQM)

3,000 SQM

TOTAL F&B AREA

300

PARKING SPOTS





amc  
اي ام سي  
سينما CINEMAS

Dolby  
CINEMA  
جولبي سينما

# AMC Cinema

*First stand-alone luxury  
cinema in Eastern Province*

5,782

TOTAL NLA (SQM)

3

UNITS

300

PARKING SPOTS





# Ajdan Rise

*Life on the Waterfront*



3,075

TOTAL NLA (SQM)

3

SEA-VIEW  
RETAIL UNITS

280

PARKING SPOTS



# أم شريف

## EM SHERIF

*Em Sherif is a distinguished fine-dining Oriental restaurant that offers unique, authentic Oriental cuisine which brings back forgotten traditional flavors, providing its guests with an unsurpassed first-class dining experience.*

## Ajdan Rise







أجدان راييز  
Ajdon Rise





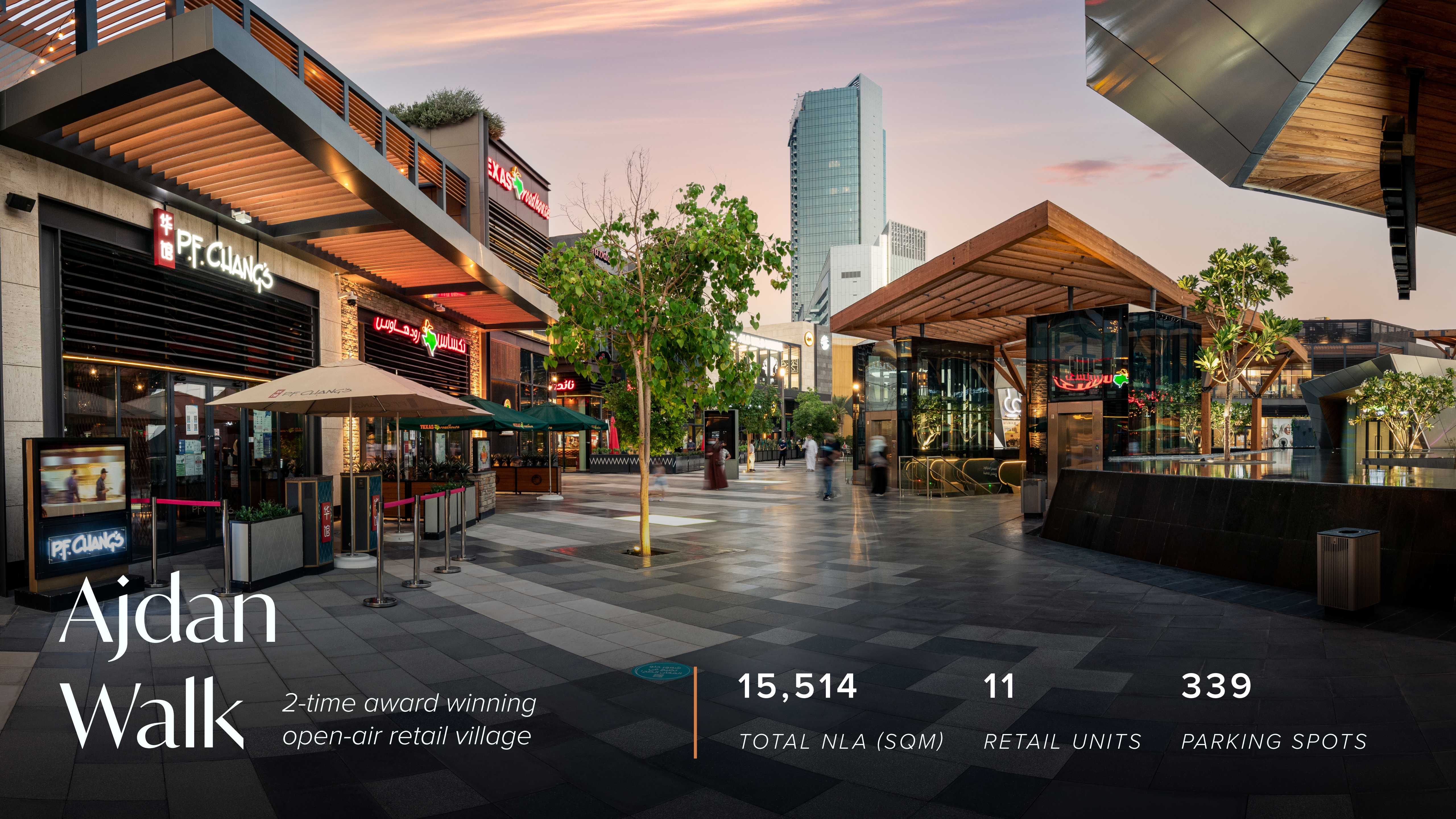












# Ajdan Walk

*2-time award winning  
open-air retail village*

15,514

TOTAL NLA (SQM)

11

RETAIL UNITS

339

PARKING SPOTS





Diverse Experiences  
Bold Flavors















WASTE  
MANAGEMENT  
POINT

PUBLIC TOILETS

PUBLIC TOILETS

UNDERGROUND  
PARKING

DROP OFF

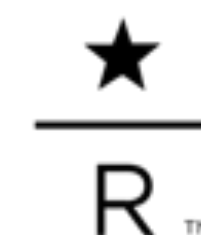
UNDERGROUND  
PARKING

SERVICE  
DROP OFF

DROP OFF



# Ajdan Walk *Tenants*





# Marketing Services



## EVENTS CALENDAR

*Varying between grand events to smaller events every quarter (Eid, Ramadan, sprint events, winter activations...etc.)*



## SOCIAL MEDIA

- Designated highlight for each tenant with information
- Quarterly brand activations (1-2 times per quarter)

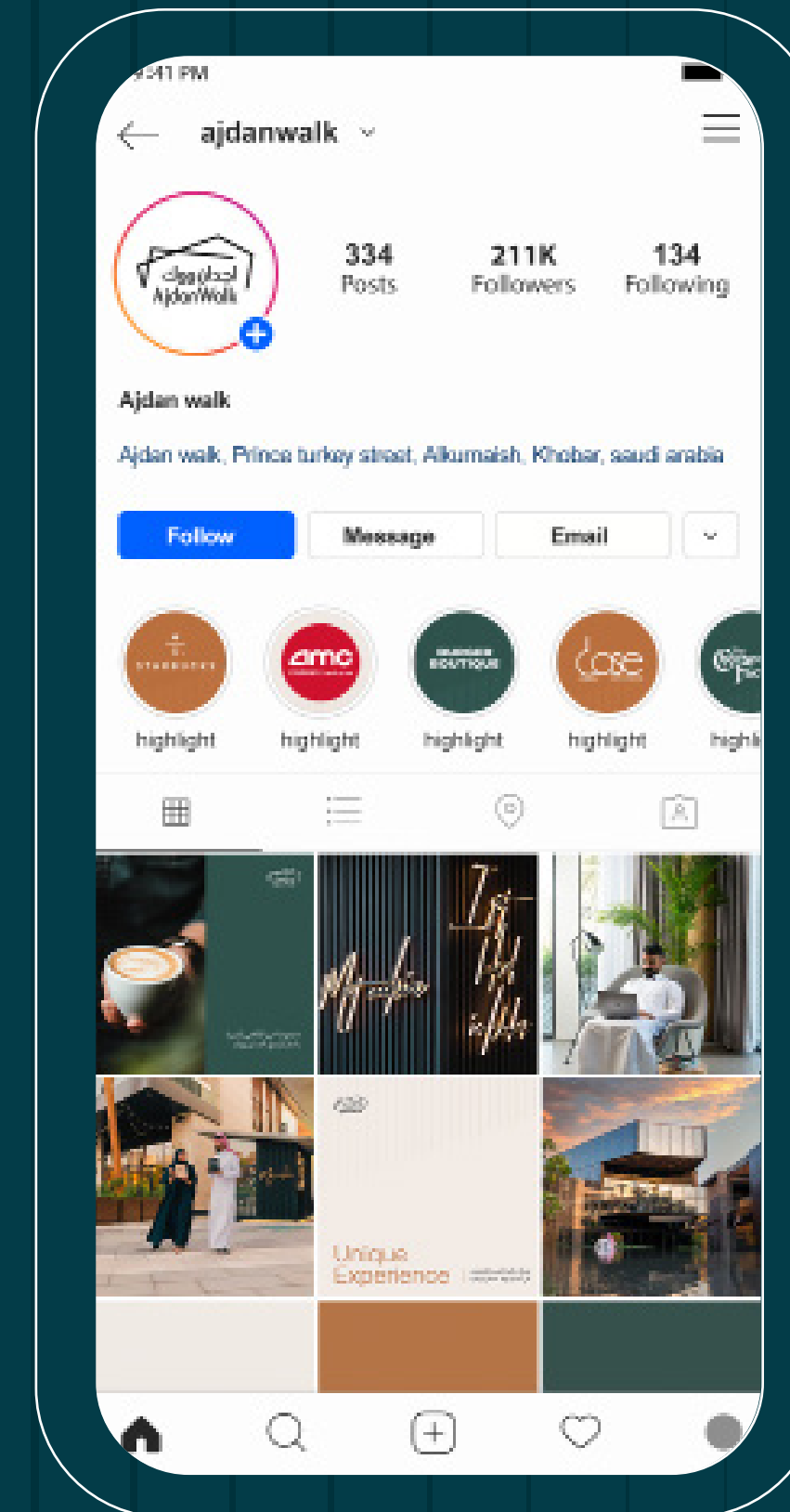


## ONLINE ADVERTISING

- Quarterly sponsored campaign
- Ongoing location campaigns on google maps



## 24/7 CALL CENTER

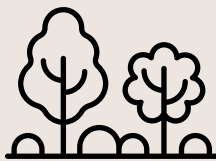




# PM Services



GENERAL SHARED  
AREAS SITE CLEANING



GENERAL SHARED AREAS  
LANDSCAPING & MAINTENANCE



FACADE CLEANING  
(ABOVE 2M FROM  
GROUND)



WASTE COLLECTION  
MANAGEMENT







**CONTACT US**  
920 000 658  
INFO@AJDAN.COM

WATERFRONT.AJDAN.COM